

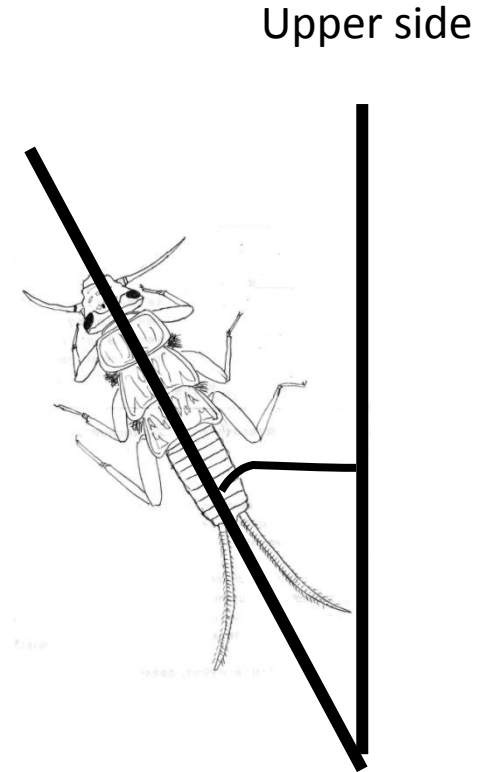
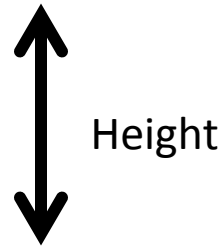
Micro-Distribution and Head Direction of Plecopteroous Exuviae

Faculty of Science, Kyoto University

B4 Shirakawa Yuma



Parameter to measure



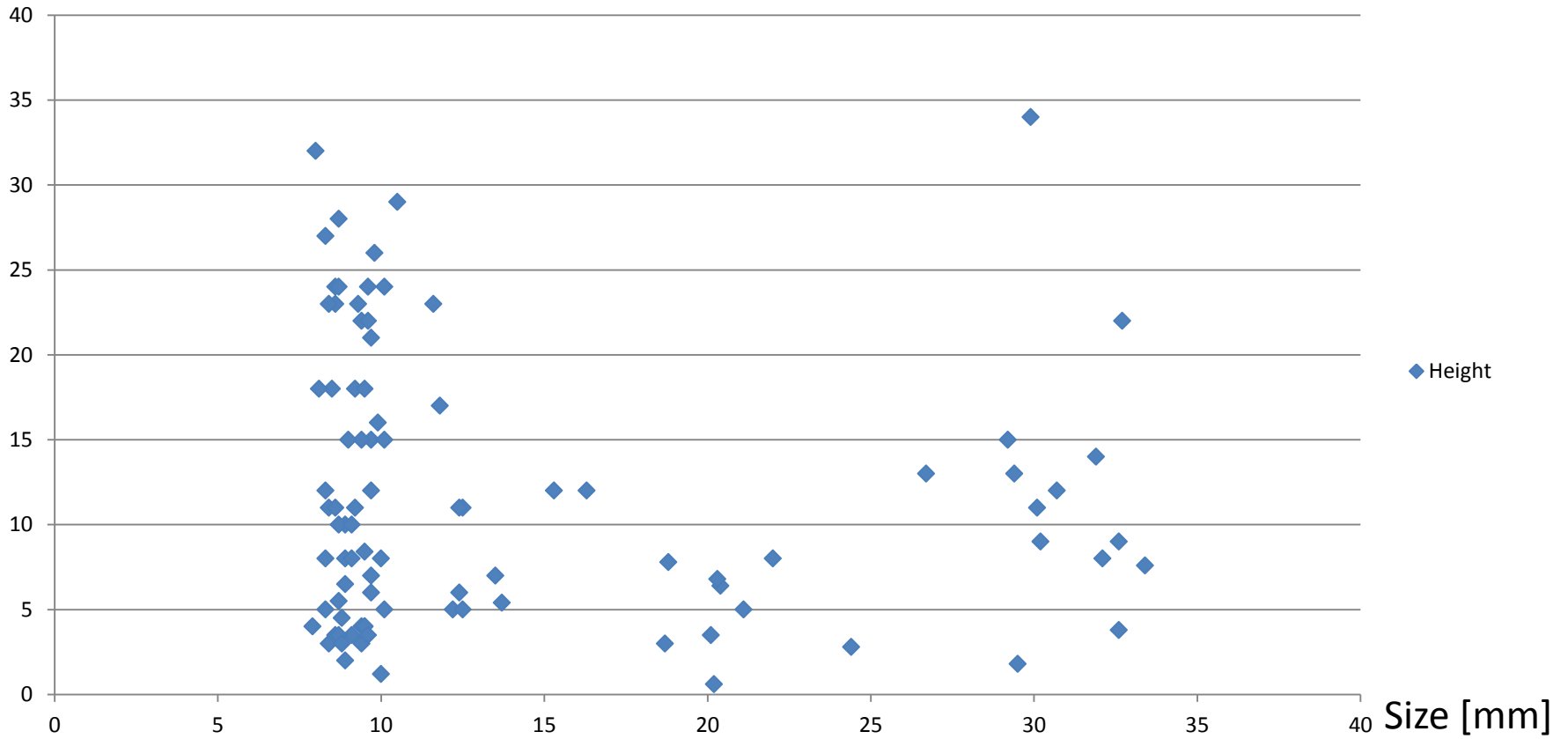
- Stone width
- Stone length
- Stone height
- Head direction by vertical direction
- Head direction by water current

Result

- 104 samples collected all along Kuro River
- *Paragnetina* sp. (Perlidae) – 22 samples
- *Ostrovus* sp. (Perlodidae) – 12 samples
- Smaller Species (including Perlodidae and Chloroperlidae) – 70 samples

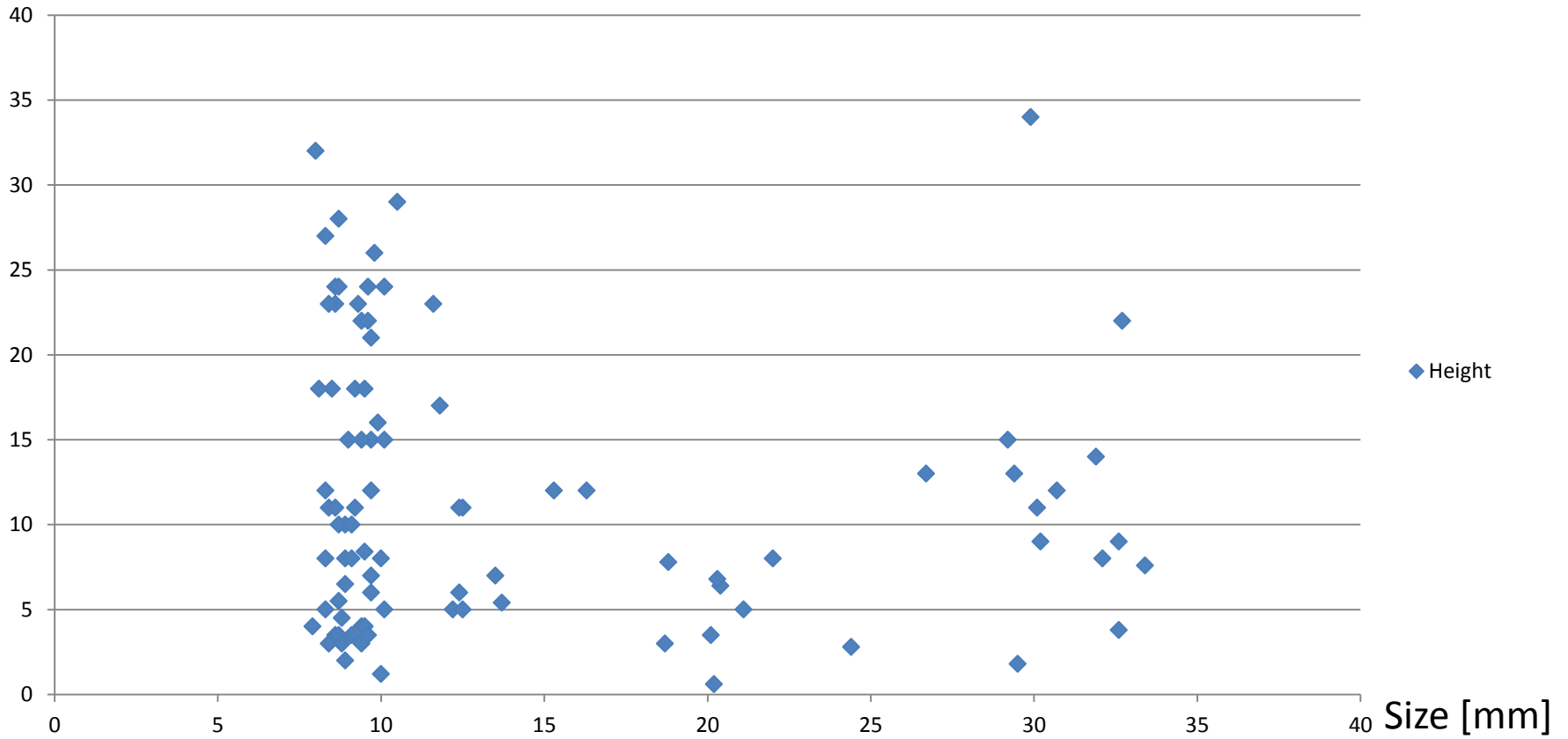
Result

Height



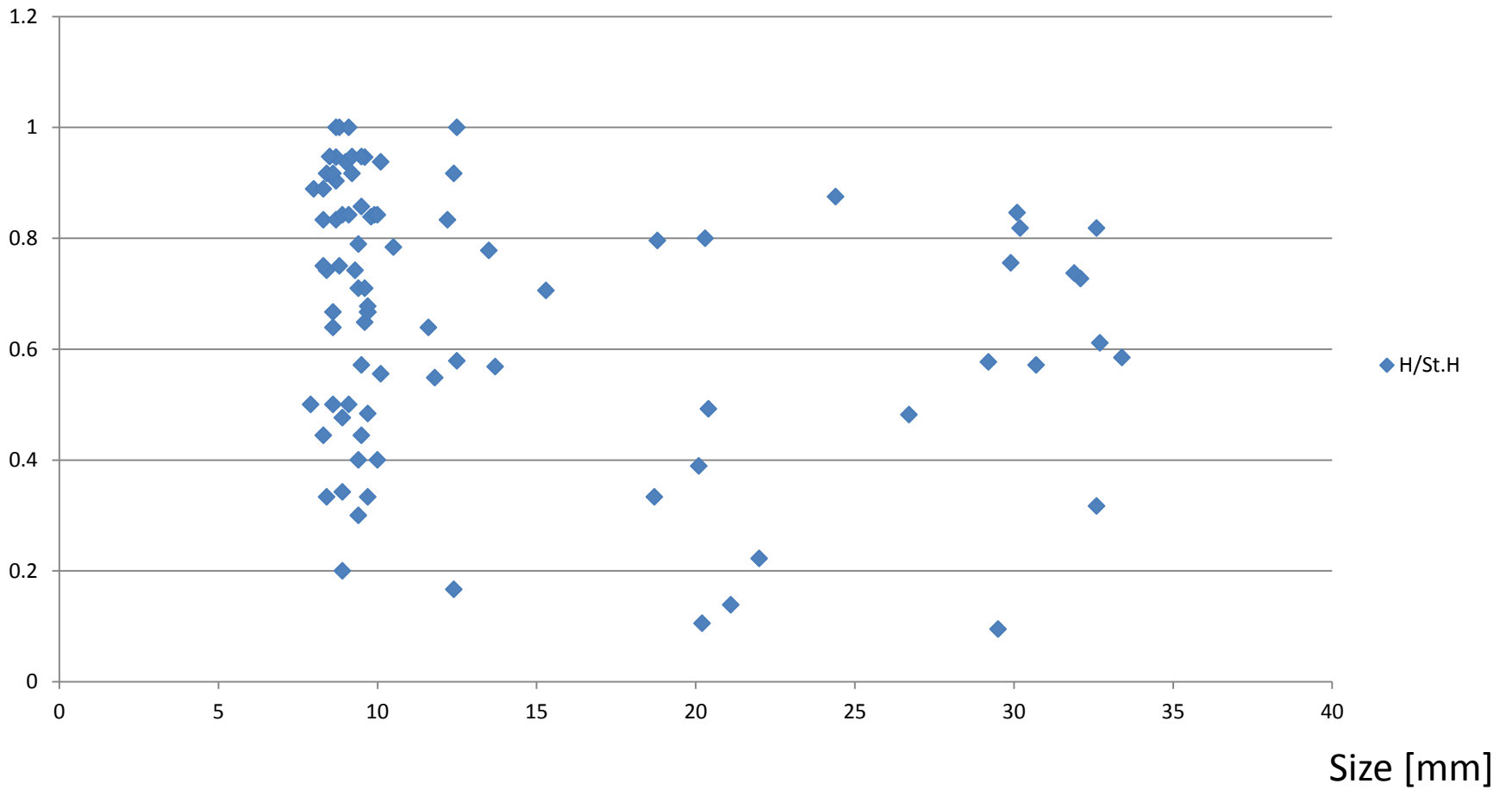
Result

Height



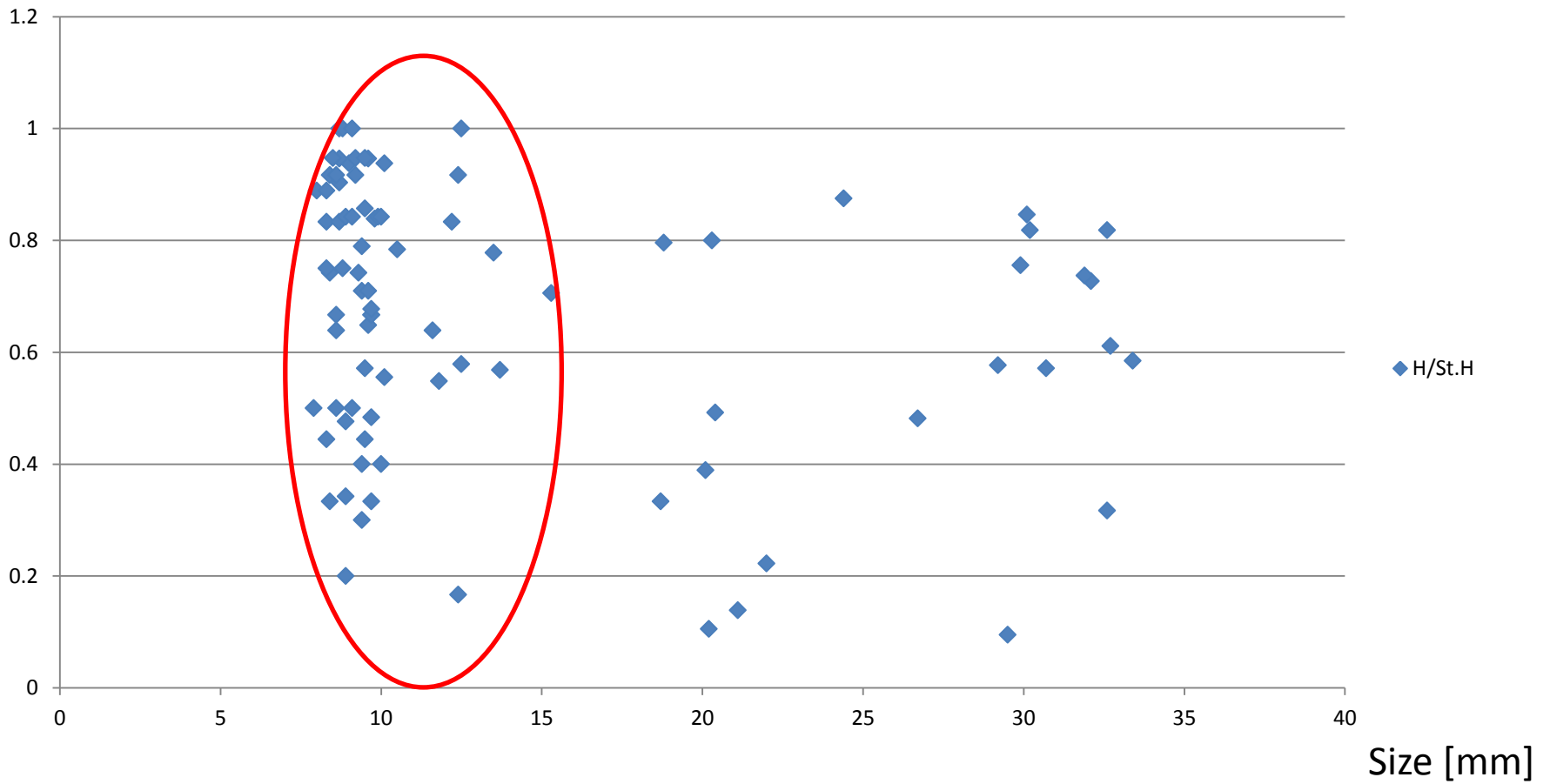
Result

Height/Stone Height



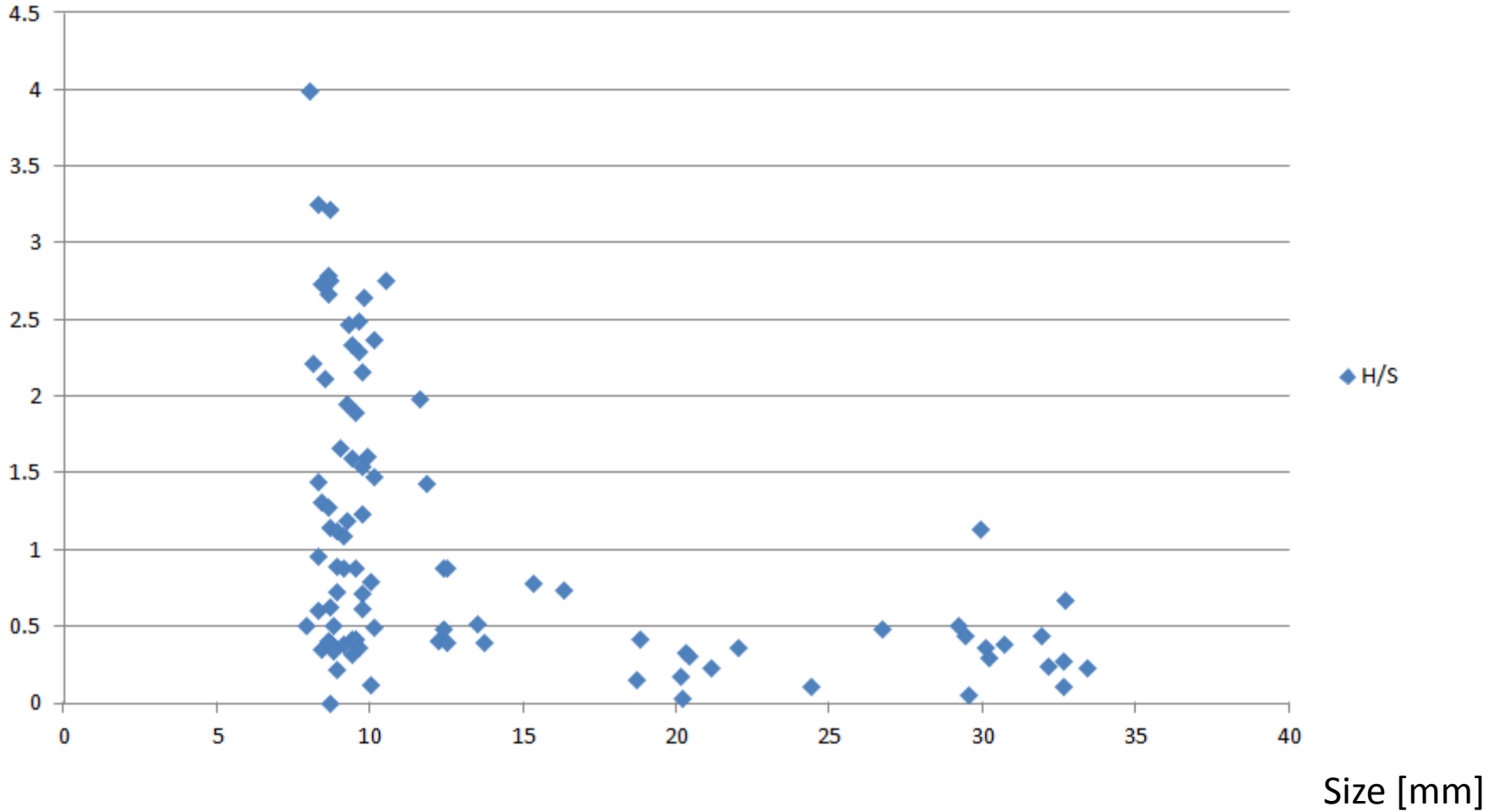
Result

Height/Stone Height



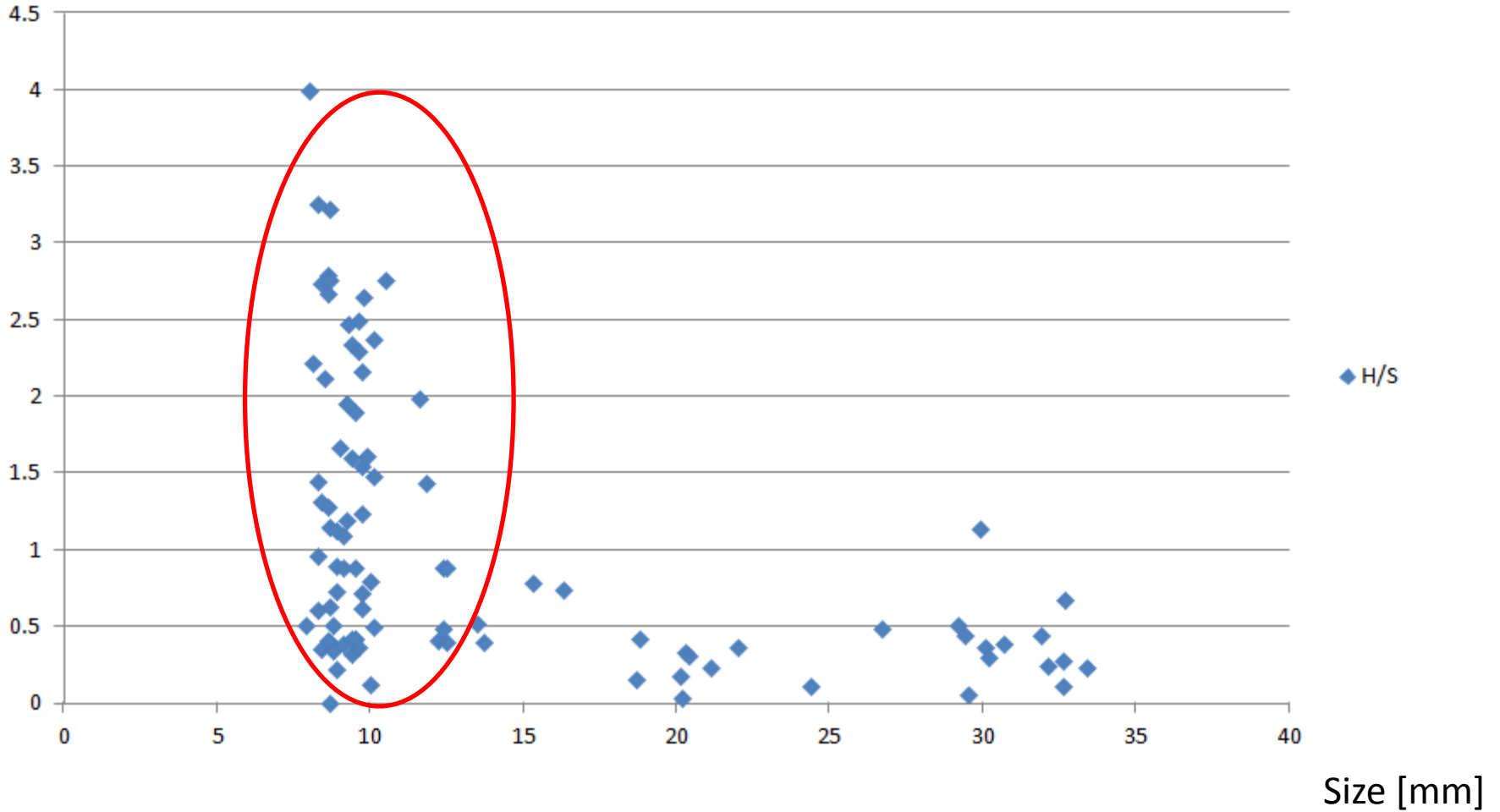
Result

Hatching Height / Size



Result

Hatching Height / Size



Result

- Data of Head direction is not yet examined
- However in my impression...
- *Paragnetina* tends to hatch nearer to the surface of water
- All Plecoptera tends to hatch orthogonally to the water current