

The condition that  
*Lepidostoma Rambur* make  
their houses.  
Ko Sugiura



# Introduction

- *Lepidostoma Rambur* (カクツツトビケラ属)  
Trichoptera, Lepidostomatidae  
トビケラ目、カクツツトビケラ科
- The larva lives around fallen leaves in the river.
- They make their nests using dead leaves, wood chips and so on.



# Purpose

- Lepidostoma Rambur can make their house very quickly.
1. What kind of material does Lepidostoma Rambur use to make nests.
  2. When they lost their nests, they rob other individual of nests or not.



# Methods

## experiment 1

- Measure strengths and weight of leaves and plastic.

leaves:chestnut(green,dead)クリ

walnut(dead)クルミ

plastic:PET bottle label

- Cut leaves and plastic in 1cm × 1cm



# Methods

	shale 1,2	shale 2,3	shale 5,6	shale 7,8	shale 9~12
30~ 40% destroy	G	B	Y	W	G B Y W
100% destroy	G	B	Y	W	G B Y W



# Methods

## experiment2

- Prepare 4 caddish flies (Big  $\times$  2, small  $\times$  2).
- 100% destroy 1 big one and small.
- Put them into shale.
- Observe

Shale 13	shale 14
Big(destroy)	Big
small	small (destroy)



# Hypothesis

## experiment 1

- soft material→weak
- hard or heavy material→difficult to design

## experiment 2

- They can't rob other's nests at any time



# Result

- material

	strengs(g)	weight(g)
chestnut	121.32	0.028
chestnut(dead)	102.26	0.012
walnut(dead)	61.61	0.022
plastic	over260	0.004





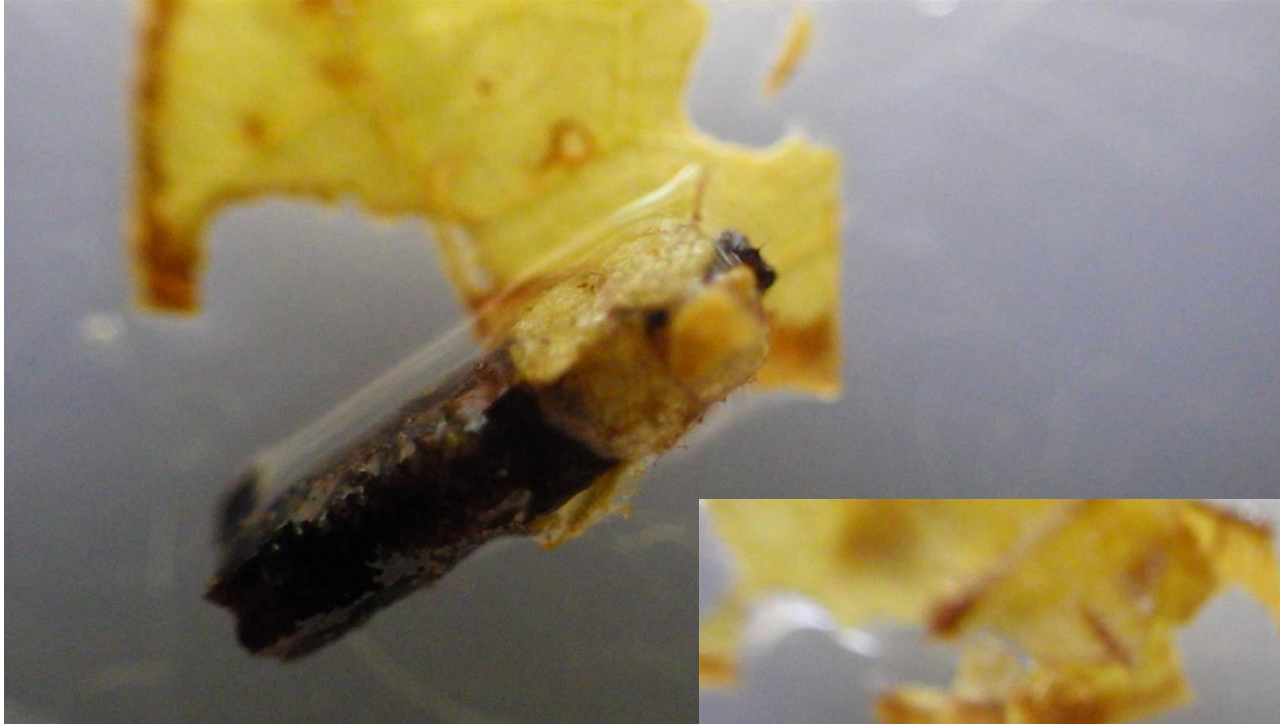
# Result

- Built nests or not

1	2	3	4	5	6	7	8	9	10	11	12
G	G	B	B	Y	Y	W	W	GB	GB	GB	GBY
30~	100	30~	100	30~	100	30~	100	YW	YW	YW	W
40	%	40	%	40	%	40	%	30~	30~	100	100
%		%		%		%		40	40	%	%
%								%	%		
×	×	×	×	○	○	×	×	×	×	×	×



# Result



# Result

- Robbed or not

shale 13	shale 14
×	×



# Conclusion

- strengs of materials  
walnut(dead)<chestnut(dead)<chestnut<<plastic
- weight of materials  
plastic<chestnut(dead)<walnut(dead)<chestnut
- Walnut leaves can be used as a material of nests.
- Lepidostoma Rambur dosen`t rob other`s nests.



# Discussion

- Why *Lepidostoma Rambur* doesn't repair their house except two larvae?
  - not enough time
  - plastic and green leaves are too hard
- *Lepidostoma Rambur* doesn't rob other's nests.
  - can easily make another nests in natural environment



Thank You

